



School Prospectus



Nepal's First MI-Based School

Godawari Residential School



"Raising the Next Generation"



**EMPOWERING
NEXT
GENERATION
OFFERING
Grade I to XII**



Every child is inherently unique, and education is a journey that helps them explore their strengths, develop their potential, and achieve meaningful success. Nestled in the tranquil surroundings of Godawari, GRS provides a safe, inspiring, and stimulating environment where curiosity is encouraged, creativity is nurtured, and confidence is built.

Guided by the motto, “Raising the Next Generation”, it blends strong local roots with a global perspective, ensuring that students not only gain academic excellence but also embrace values, culture, and a sense of responsible citizenship. It focuses on creating holistic learners, who think critically, act ethically, communicate effectively, and collaborate with empathy.

From grade I through XII, programs are designed to engage students in active learning, practical experiences, and reflective thinking, guiding them at every stage to build skills, confidence, and curiosity. This continuous progression ensures that as students move from one grade to the next, they are fully prepared to face the challenges of the 21st century with resilience, creativity, and critical thinking. Education is about nurturing young minds to grow into confident, thoughtful, and capable learners, equipped with the skills and mindset to excel in higher education and beyond; and learning here makes a meaningful impact in community and the world.

GRS stands out for:

1

Multiple Intelligence–Based Learning

We identify and nurture each child’s natural strengths, allowing students to learn in ways that suit their unique talents.

2

Modern Learning Tools

Classrooms are equipped with smart boards and audio-visual aids, and teaching is enriched with Neuro Linguistic Programming, Mind Mapping, Inquiry-Based Learning, Project-Based Learning, Problem-Based Learning, and Phenomenon-Based Learning, all designed to make learning engaging, practical, and meaningful.

3

Holistic Environment

Small class sizes, a pollution-free academic institution, safe spaces, and a junk-food-free policy create a nurturing environment where students can flourish.

4

Balanced Development

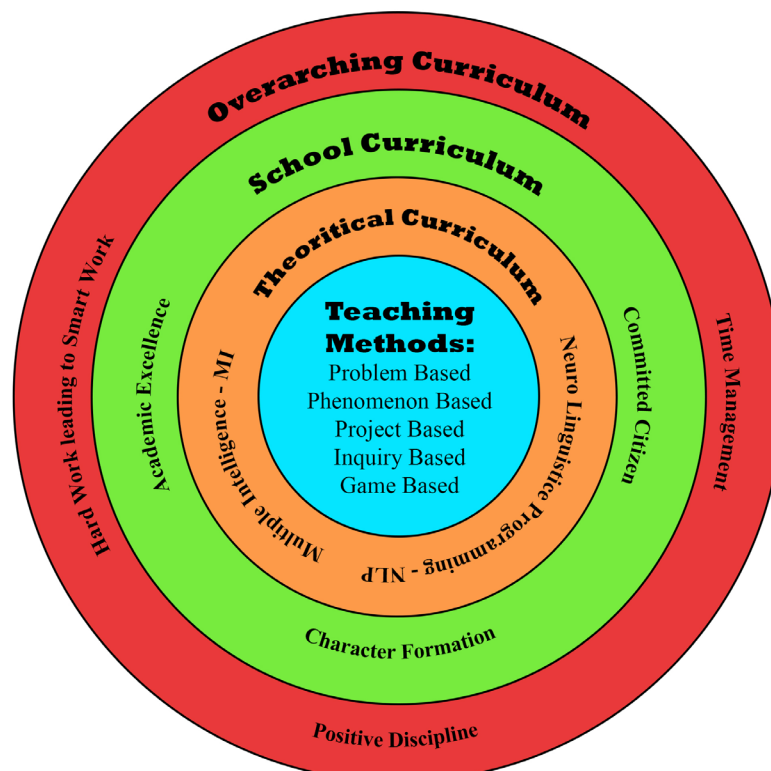
Academics are combined with sports, arts, music, in-depth discussions, and community service, ensuring students develop mentally, physically, and emotionally.

5

Grade XI–XII Special

Innovative Management Programs to foster entrepreneurship, financial and digital literacy, and real-world problem-solving, preparing students for higher education and life beyond school.

GRS Curriculum



PHILOSOPHY

1 Every Child is Unique

GRS sees each child as a story in the making, than number in a classroom. No two learners are the same, and education should honor that truth. Lessons here are interactive, personalized, and experiential, giving students the space to grow at their own pace and according to their talents, interests, and dreams.

2 Education for Sustainable Development

Education should prepare students not only for exams but for life. GRS curriculum integrates global issues like climate change, biodiversity, poverty reduction, disaster awareness, and responsible consumption. Students learn how their everyday choices shape the future of their community and the planet.

3 Peace and Justice

Good education is also a moral compass. GRS guides students to think ethically, respect differences, act fairly, and stand up for what's right. Whether it's in the classroom or the community, learners are encouraged to use their voice and actions for peace and justice.

4 Global Citizenship, Local Awareness

In today's interconnected world, students need a broad vision without losing their roots. At GRS, learners develop 21st-century skills and global perspectives while remaining deeply connected to Nepali culture, language, and traditions. They grow up understanding that respecting their heritage is part of being a true global citizen.

5 Holistic Development

Education should light up every part of a child, than just the mind. Alongside academics, GRS gives equal importance to arts, sports, music, outdoor experiences, leadership opportunities, and community engagement. This balance builds confidence, creativity, discipline, and resilience, preparing students for life, not just tests.

6 Happy School Approach

GRS believes happiness fuels learning. A child who feels safe, respected, and encouraged is naturally curious and eager to grow. That's why every policy, classroom activity, and teacher-student relationship is built around care, joy, and motivation. A happy school creates lifelong learners.





VISION & MISSION



Vision

GRS envisions a learning community where students grow into globally competent, deeply rooted individuals.

Mission

GRS provides an environment where every student can discover, learn, and grow holistically mentally, physically, and morally. It aims to create a space where curiosity is nurtured, talents are recognized, and values are lived. Specifically, it strives to:

Foster Joyful Learning: We create a happy, safe, and supportive environment where students feel valued, confident, and motivated to explore, question, and express themselves. Learning is engaging, inclusive, and meaningful.

Empower Unique Talents: Using Multiple Intelligence based learning, personalized guidance, and mentorship, we help every child identify, embrace, and strengthen their natural abilities. Each student is encouraged to shine in their own way.

Blend Knowledge with Values: Academic learning goes hand-in-hand with ethical reasoning, social responsibility, and environmental consciousness. We help students develop both competence and character, preparing them to make thoughtful decisions in life.

Prepare Global Citizens: While honoring our local culture, we equip students to navigate and contribute to a globalized world. They learn empathy, cross-cultural understanding, and the skills needed to prosper responsibly in diverse contexts.

Inculcate Life Skills: Time management, self-discipline, critical thinking, creativity, collaboration, and resilience are embedded into every activity and lesson, ensuring students are ready for challenges in school and beyond.

Bridge Theory and Practice: Through project-based, inquiry-based, and experiential learning, students connect classroom knowledge with real-world applications. They solve authentic problems, experiment, collaborate, and reflect making learning practical, memorable, and transformative.

Encourage a Lifelong Learning Mindset: Beyond grades, GRS introduces curiosity, initiative, and adaptability so students continue to grow, explore, and excel long after their academic lives.



CURRICULUM & TEACHING METHODOLOGY

Grades 1–V: International Curriculum

GRS follows an International Curriculum that blends global best practices with local context. Language and Numeracy sit at the heart of our program. Strong reading, writing, speaking, and mathematical thinking give students the tools to explore every other subject with clarity and confidence.

Instead of teaching in isolation, the curriculum is thematic and integrated. Students discover meaningful links across disciplines, Science, History, Geography, Art, and Literature, while always strengthening their language and number sense. Learning here is designed to feel like an adventure, interconnected, practical, inclusive, and memorable.



Key Features:

Thematic & Inquiry-Based Learning: Children learn through engaging themes that spark curiosity and invite them to ask questions, investigate, and share their findings.

Skills for the Future: Communication, collaboration, problem-solving, and critical thinking are intentionally built into classroom experiences.

Global Perspectives, Local Roots: Students learn to appreciate cultural diversity and global issues while staying deeply connected to local language, heritage, and values.

Assessment for Growth: Evaluation is continuous and multifaceted, including projects, reflections, presentations, and teacher feedback, ensuring every child's progress is understood and supported.

Active & Experiential Methods: Field visits, project exhibitions, role plays, and creative performances transform concepts into lived experiences.

Integrated ECA & CCA: Co-curricular and extra-curricular activities are not treated as add-ons, but as extensions of classroom learning: sports, arts, clubs, and service projects are purposefully linked with academics to nurture the whole child.



“GRS links the international curriculum to prepare students for life in a rapidly changing world.”

Grades VI–X: National Curriculum with Global Enrichment

As students step into middle and secondary school, GRS builds on the international approach experienced in the primary years while aligning with the Curriculum Development Centre framework.

Key Features:

Core Academic Strength: Students receive a solid grounding in Mathematics, Science, and language, equipping them with the knowledge required for national examinations and beyond.

Global Perspectives, Local Relevance: Lessons go beyond textbooks, linking concepts to global ideas while drawing from Nepali culture, heritage, and language. This dual lens helps students value their identity while expanding their worldview.

Skill Building for the Future: We emphasize higher-order skills, analytical thinking, problem-solving, research, and effective communication, ensuring that students are prepared not only for further studies but also for life challenges.

Experiential Learning: From science projects and social campaigns to cultural immersion activities and fieldwork, students learn by doing, connecting theory with practice.

Character and Citizenship: Education is also about shaping responsible individuals. Our approach encourages students to engage with their community, reflect on ethical issues, and develop the confidence to contribute positively to society.





Grades XI–XII: Management Program

Grade XI and XII Management Program is about shaping future leaders transcending the boundary of exams. It builds on the academic foundation of earlier years and moves students into a world where ideas, innovation, and leadership matter. The program combines strong theoretical knowledge with practical exposure, giving students the confidence and skills to thrive in business, entrepreneurship, and higher studies both in Nepal and abroad.

Key Features:

Solid Business Foundation: Core courses such as Economics and Accounting, equip students with an in-depth understanding of how organizations and economies function.

Leadership & Entrepreneurship: Students are challenged to think beyond textbooks, through case studies, projects, and simulations, they learn to take initiative, solve problems, and build an entrepreneurial mindset.

Financial Literacy for Life: From personal budgeting to investment basics, students develop financial skills that prepare them not just for business but for smart, independent living.

Digital Edge: With the digital economy reshaping every field, technology and digital tools are integrated into the curriculum to help students work, create, and lead effectively in a tech-driven world.

Global & Local Relevance: While the program draws on international business perspectives, it is firmly connected to the Nepali context, encouraging students to explore how management principles apply to local industries and communities.



The program blends academic rigor with real-world learning, personal growth, and the independence students need at this stage of their lives.

A Personalized Journey

Every student's path is different, and we make sure their education reflects that. With individual learning plans, mentor support, and flexible opportunities to dive into entrepreneurship, arts, or leadership, students learn at their own pace while staying focused on their long-term goals. The idea is instead of fitting everyone into the same mold, we help each student uncover their strengths and build on them.

Learning by Doing

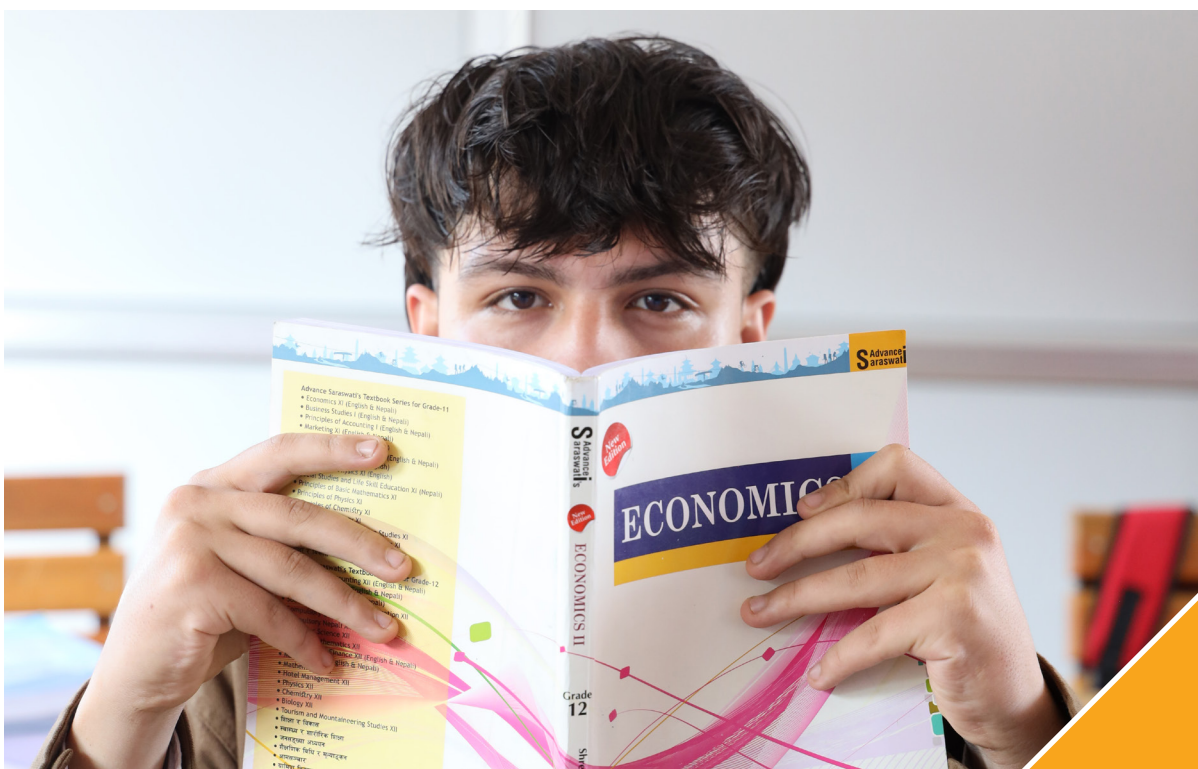
Textbooks are important, but they're only part of the picture. Students explore through project-based work, inquiry-driven discovery, and hands-on problem-solving. Whether it's tackling a business challenge, researching environmental issues, or engaging in phenomenon-based studies, they experience learning in action. Industry visits and field immersions connect them directly to real workplaces, showing how classroom concepts translate into life beyond school.

Entrepreneurship and Leadership

Students here think like innovators and act like leaders. Through practical entrepreneurship modules, students learn how businesses work, from financial literacy to market research and startup strategy. Leadership development happens through workshops on communication, decision-making, and emotional intelligence, paired with mentorship from industry professionals. Guest speakers, both national and international, add perspective and inspiration, reminding students that possibilities are limitless.

Academic Excellence with Career Readiness

Academics remain central. Students can pursue advanced courses in Management while also sharpening essential skills like research, digital literacy, and critical communication. Our career counseling program helps students explore higher education opportunities, prepare for scholarships, and make informed decisions about their future. The balance between rigorous academics and practical preparation ensures that students graduate not only exam-ready, but life-ready.



TEACHING METHOD

Learning How to Learn

Teaching approach is designed to spark curiosity, train the mind to think critically, and help children grow into confident learners. Faculty blends international best practices with research-backed strategies and practical local wisdom so that learning is meaningful, engaging, and personal to every student.

Smart Classrooms

Each room is equipped with modern audio-visual tools that transform lessons into immersive experiences. This multi-sensory exposure; visual, auditory, and kinesthetic, ensures deeper understanding and long-term retention with the major spirit of Multiple Intelligence based academic institute.



Neuro-Linguistic Programming (NLP)

GRS takes pride in being the first school in Nepal to weave NLP into everyday learning. NLP is about understanding how the brain, language, and behavior connect. Through practical tools like visualization, positive reinforcement, and sensory-based learning, students develop habits of confidence, resilience, and self-motivation.

Our Director Principal certified NLP coach, guides students and team of educators and staff in modeling excellence, learning not just what successful people do, but how they think. Whether it's preparing for exams, tackling stage fright, or building leadership qualities, NLP gives our students and team the mindset to perform at their best in school and beyond.

Multiple Intelligences (MI)

Every child carries a different spark. GRS makes it a job to discover and nurture it. At the start of school, we use Dermatoglyphics Testing along with careful year-round observation to map each student's natural learning preferences.

Drawing inspiration from Howard Gardner's theory of Multiple Intelligences, we recognize that intelligence comes in many forms: linguistic, logical-mathematical, spatial, musical, bodily-kinesthetic, interpersonal, intrapersonal, and naturalistic and align teaching methods with these intelligences, to ensure that no child feels left behind, and every child feels celebrated for who they are.

Project-Based Learning

Students dive into real-world challenges; researching, creating, experimenting, and presenting. Whether it's designing eco-friendly models, exploring local history, or developing small business ideas, students learn by experiencing. As Piaget put it, "Knowledge is a consequence of experience", and that's exactly what we give them.

Phenomenon-Based Learning

The best classroom is the world outside the classroom. Phenomenon-Based Learning connects academic knowledge to real-life events and issues. Instead of isolated facts, they see how everything is connected, making learning not only relevant but transformative.

Inquiry-Based Learning

Curiosity is the heart of true learning. Through IBL, we encourage students to ask questions, explore answers, and discover new connections. This method builds critical thinking, logical reasoning, teamwork, and communication skills.

Problem-Based Learning

Students are challenged with real scenarios that require teamwork, research, and creative solutions. They learn not only what to think but how to think, systematically, practically, and confidently.

Mind Mapping

GRS wants students to see the bigger picture, not just memorize details. That's where mind mapping comes in. Students use mind maps to brainstorm, link concepts, and connect knowledge across subjects.



Teamwork & Collaborative Learning

Students work in teams, share perspectives, and solve problems together. These collaborative experiences sharpen communication, empathy, and leadership skills, qualities that matter just as much outside the classroom as inside.

Tours, Excursions & Field Visits

Every term, students step out to explore local ecosystems, cultural landmarks, industries, and community projects, turning concepts into experiences they can see, touch, and understand. Annual tours take them further, across Nepal and beyond, immersing them in new landscapes, traditions, and ways of learning. Through these journeys, students gain independence, build confidence, and develop a broader perspective on the world. Carefully selected student exchange programs and international visits allow them to collaborate with peers from other countries, experience different cultures, and grow as globally aware citizens.



LABORATORIES & LEARNING SPACES

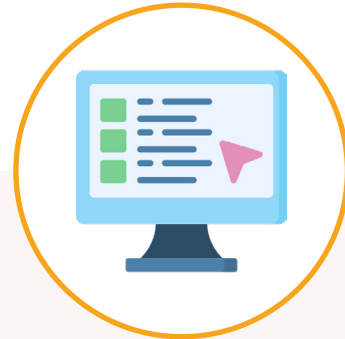
Where Curiosity Meets Practice

GRS believes true learning happens when curiosity meets practice. A textbook can spark an idea, but a lab turns that idea into experience. Every lab here is a hub of creativity, exploration, and confidence-building.



Science Lab

Our well-equipped Science Lab gives students the opportunity to dive into Physics, Chemistry, and Biology with their own hands. Whether it's testing a hypothesis, mixing chemicals safely, or studying biological specimens under a microscope, students learn to connect theory with reality.



Computer Lab

Our Computer Lab provides students with access to high-speed internet, the latest computers, and educational software. They learn not only basic digital literacy but also coding, multimedia presentations, and responsible internet use. It's a space where creativity meets technology, whether designing projects, researching, or collaborating on group assignments.





Math Lab

We make math visible and touchable. The Math Lab turns numbers and formulas into puzzles, models, and games that students can engage with. Abstract concepts like fractions, algebra, geometry, and statistics suddenly become concrete through hands-on tools and real-life simulations.



HOLISTIC DEVELOPMENT & ENRICHMENT

Learning Beyond the Classroom

Co-curricular and extra-curricular activities are not side programs here; they're seamlessly built into the learning experience. Every activity; whether on the field, on stage, in a lab, or in a club; is designed to enrich academic growth and nurture well-rounded, confident individuals.

Regular ECA Structure

Students from grades I-III participate in one structured ECA every day, ensuring balanced exposure to movement, creativity, language, and play. Activities are age-appropriate, guided, and integrated with classroom learning.

Students from grades IV-XII follow a well-balanced ECA ratio alongside academics, with scheduled club periods, guided practice sessions, and extended opportunities on Fridays. This ensures depth without overloading students.

Sports Club

Students choose sports based on interest and all activities are conducted under trained coaches.

Sports Offered:

- » Football
- » Volleyball
- » Basketball
- » Badminton
- » Table Tennis





Taekwondo Club

Taekwondo is offered as a specialized club for all the students, independent from general sports activities, due to its structured progression and discipline-based training.

“Raising the Next Generation”



Creative Clubs

Students are grouped based on their interests, and trained instructors guide them through regular practice, feedback, and performance-based learning.

Creative Clubs include:

Music Club: Vocal and instrumental training across classical, contemporary, and cultural forms.

Art Club: Drawing, painting, crafts, sculpture, and digital art.

Dance Club: Classical, folk, and modern dance styles.

Drama Club: Acting, voice modulation, storytelling, stage presence, and collaborative performance.

Reading Club: Encourages reading habits, comprehension, discussion, and critical thinking through guided sessions and peer interaction.

Innovation Club: Hands-on activities, problem-solving, creativity, and entrepreneurial thinking.

Environment Club: Sustainability projects, conservation awareness, and environmental responsibility.

Social Club: Service learning, empathy building, leadership, and civic engagement.

MI-Based Clubs

Fridays are dedicated to Club Deep-Dive Sessions.

- » All clubs Sports, Creative, Language, Innovation, Social, Environment, and MI-based clubs operate on Fridays.
- » Students are systematically divided into eight Multiple Intelligence clubs based on their DMIT reports.
- » This structure allows students to work in alignment with their natural strengths while exploring new skills.

After-School Enrichment: Turning Talent into Mastery

Our after-school enrichment program is crafted for students who want to take their passions further and grow under professional guidance.

Specialized training is offered in major sports: Volleyball, Football, Badminton, and Basketball, where students practice systematically, develop game sense, and receive mentoring that builds them as future athletes. Equally strong are our Music, Art, and Dance programs, designed to give creative students the space, structure, and inspiration to refine their skills to a professional level.





More Than Clubs: A Whole-School Celebration of Learning

Book-Free days transform the entire school into a living laboratory:

Sports Grounds: Football, basketball, volleyball, badminton, and taekwondo sessions keep students active and competitive.

Studios Alive: Art rooms, music halls, and dance floors buzz with creative energy and rehearsals.

Learning Beyond Walls: Field trips and outdoor projects take students into real-world spaces where concepts come alive.

Celebration of Achievements: Each Friday closes with an award ceremony where students are recognized for creativity, teamwork, innovation, or leadership.

By the end of the day, hallways have turned into galleries, playgrounds into stages, and every corner of GRS carries the spirit of curiosity and joy.





Integration with Curriculum

Clubs and ECAs are seamlessly integrated into the educational experience; they are not merely extracurricular. Every activity is thoughtfully scheduled to complement academics, reinforce classroom learning, and cultivate practical skills. Whether through team projects, workshops, or hands-on experiences, students learn to apply knowledge in meaningful ways while balancing personal growth and academic achievement.

Outcomes of Holistic Development:

Participation in our holistic programs ensures that students:

- » Build physical fitness, resilience, and collaborative skills through sports and active pursuits.
- » Discover and refine creative, artistic, and performance talents.
- » Enhance communication, leadership, teamwork, and social skills.
- » Grow into responsible, empathetic, and confident global citizens.
- » Gain exposure to real-world challenges, problem-solving, and innovation.



LEARNING WITHOUT WALLS

Multiple Intelligence Based Clubs

True learning doesn't come only from textbooks. To bring this vision alive, we pioneered Book-Free days, a weekly tradition where classrooms open up, books are set aside, and students dive into experiences that stretch knowledge, skills, and creativity beyond the printed page.

Rooted in Multiple Intelligences

As Nepal's first Multiple Intelligence school, we don't stop at simply identifying students' talents, we design their learning pathways around them.

2

Logical-Mathematical Club

Puzzle-solving, coding basics, and strategy games that ignite problem-solving skills.

1

Linguistic Club

Public speaking, debates, and storytelling sessions that sharpen communication.

3

Spatial/Visual Club

Model-making, sketching, and design challenges that turn imagination into form.

4

Bodily-Kinesthetic Club

Sports drills, dance choreography, and role-play that channel energy into learning.

Eight Clubs, Eight Pathways to Learn

Every Friday, students join one of our Multiple Intelligence Clubs. Each club is carefully designed to nurture a distinct way of thinking and learning, with activities guided by mentors who know how to bring out the best in each intelligence:

5

Musical Club

Rhythm circles, songwriting, and instrument training that build harmony and expression.

6

Interpersonal Club

Team projects, drama, and collaborative games that grow leadership and empathy.

8

Naturalistic Club

Public speaking, debates, and storytelling sessions that sharpen communication.

7

Intrapersonal Club

Journaling, meditation, and reflective projects that nurture self-awareness and focus.

PROJECTS

Learning by Doing, Thinking by Doing

Knowledge truly sticks when students actively apply it to real-life situations. Beyond regular classroom assignments, students engage in long-term, hands-on projects designed to develop creativity, critical thinking, problem-solving, and collaboration. Each project is carefully aligned with Gardner's 8 Multiple Intelligences, allowing every student to learn and excel according to their natural strengths.

How Projects Work

- » **Personalized Assignment:** Every project is matched to the student's MI profile logical-mathematical, linguistic, spatial, musical, bodily-kinesthetic, interpersonal, intrapersonal, or naturalistic intelligence, so learning feels natural and motivating.
- » **Real-World Relevance:** Projects connect classroom concepts to authentic, real-life problems, helping students understand the practical significance of what they learn.
- » **Teamwork & Collaboration:** Many projects are conducted in groups, fostering leadership, planning, communication, and cooperative problem-solving skills.
- » **Mentor Support:** Teachers guide students through every stage, from ideation and research to experimentation, analysis, and final presentation, ensuring depth, clarity, and reflection.

Signature Example: Herbal Gardening Project

Targeted Intelligence: Naturalistic

Objective: Students cultivate herbal plants in the school greenhouse, studying their growth cycles, medicinal properties, and cultural importance.

Learning Outcomes:

- » Hands-on botanical knowledge and environmental stewardship
- » Research, observation, and documentation skills
- » Appreciation for traditional medicine, local culture, and sustainability
- » Teamwork, responsibility, and project management skills



Innovation & Technology Projects

Students design models, apps, or tools to address real-world problems, blending creativity with STEM knowledge.

Social Awareness Projects

Community initiatives like clean-up drives, awareness campaigns, or charity events cultivate empathy, civic responsibility, and leadership.

Cultural & Arts Projects

Theatre performances, music productions, art exhibitions, and creative showcases give students a platform to express themselves while building confidence and collaboration skills.

Entrepreneurship Projects

Students develop micro-businesses, design products, and market them within the school or community, gaining practical business and financial experience.

Projects are not optional, they are a core part of learning. By designing, exploring, and executing projects, every student has the opportunity to learn by doing, discover their unique talents, and apply knowledge in meaningful, practical ways that extend well beyond the classroom.





READING PROGRAM AT GRS

Building Thinkers, Dreamers, and Leaders



Reading is more than an academic skill; it's the foundation of critical thinking, imagination, empathy, and lifelong learning. GRS has made reading one of the cornerstones of our learning culture to:

Build Knowledge: Books open worlds far beyond the classroom, connecting students to history, science, cultures, and ideas that shape the future.

Strengthen Thinking: Reading sharpens focus, comprehension, and the ability to analyze and evaluate information.

Develop Empathy: Through stories, students experience different perspectives, helping them understand and respect others.

Boost Communication Skills: Regular reading enhances vocabulary, grammar, and expression, skills vital for success in both academic and real-life situations.

Ignites Imagination: Books fuel creativity and help students dream beyond boundaries.

Every term, each student is assigned to read books, carefully chosen to match their level and interests. Progress is tracked through the Reading Hub (Library).



The program doesn't stop at just reading. Students discuss, reflect, and sometimes present what they've read, turning reading into an active, shared journey rather than a solitary task.

ASSESSMENT & PROGRESS TRACKING

Learning That Speaks

Assessment is a tool to understand each child, guide their growth, and celebrate every step of progress. We believe that when students receive meaningful feedback, they become active participants in their own learning, developing confidence, curiosity, and self-awareness.

Continuous and Personalized Assessment

GRS tracks learning continuously, using a combination of formative and summative methods. This helps identify strengths, pinpoint areas for improvement, and tailor guidance to each student's unique learning profile.

Skills and Competencies Focus

We assess not just knowledge, but skills, creativity, critical thinking, problem-solving, collaboration, and personal development. This holistic approach ensures students grow academically, socially, and emotionally.

Celebrating Progress

Feedback is constructive, supportive, and encouraging. We celebrate achievements: big or small, helping students feel motivated and inspired to keep learning.

Partnership with Parents

Assessment is a shared process. Regular progress reports, parent-teacher meetings, and personalized feedback sessions ensure families understand their child's journey and can reinforce learning at home.

The Outcome

Students at GRS learn to reflect on their own progress, embrace challenges, and set personal goals. Assessment becomes a pathway to growth, not just a measure of performance, ensuring every child reaches their full potential.



Early Primary Grades (I–III)

First years of schooling are about curiosity, exploration, and developing a love for learning. GRS does away with traditional summative exams in Grades I–III. Instead, focuses on observing, guiding, and celebrating growth every step of the way.

Continuous Assessment: Learning is tracked daily through interactive class activities, projects, discussions, and participation

Student Profiles & Portfolios: Every child has a personalized profile that captures achievements, learning milestones, reflections, and creative work.

Holistic Documentation: Educators observe and document not just academic progress, but also social skills, emotional maturity, creativity, problem-solving, and collaboration.

Parent Communication: Comprehensive, thoughtfully designed reports are shared with parents, providing a clear and holistic view of each child’s strengths, areas for growth, and progress.

At this stage, assessment becomes a tool for guidance rather than judgment, helping children gain confidence, explore their talents, and build a strong foundation for future learning.

“ Assessment Philosophy

Guided by “Assessment for Learning,” every evaluation is a step toward growth, not just a measure of performance.

Primary to Secondary Grades (IV–XII)

Assessment grows with the student. From Grade IV onwards, GRS blends structured evaluations with continuous observation to create a complete picture of learning and growth.

Formal Exams: Written, oral, and practical assessments help measure comprehension, application, and critical thinking. Exams are designed to encourage understanding rather than rote memorization.

Classroom Participation & Presentations: Active engagement is valued as much as scores. Students are encouraged to ask questions, present ideas, and contribute to discussions, building communication skills, confidence, and curiosity.

Projects & Assignments: Hands-on projects and assignments link classroom learning to real-world contexts, fostering creativity, problem-solving, and deeper understanding of concepts.

Home & Class Work: Daily practice reinforces consistency, responsibility, and independent learning, ensuring that students take ownership of their progress.

Group Work & Individual Tasks: Collaborative and individual activities nurture teamwork, personal accountability, and social skills, preparing students for life beyond school.

Viva & Oral Tests: These evaluations focus on clarity of thought, expression, and comprehension, encouraging students to articulate ideas confidently and think critically on the spot.

Soft Skills & Life Skills: Assessment also includes communication, leadership, empathy, and critical thinking, recognizing that success in life requires more than academic knowledge.

Parent Feedback & Rubrics: Detailed reports, rubrics, and discussions ensure parents are active partners in their child’s learning journey, reinforcing strengths and addressing areas for growth collaboratively.



COUNSELING AND WELLNESS

Mind - Body - Soul



Today's students face a unique set of challenges, pressure to perform, social expectations, emotional stress, and the constant flow of information from the world around them. In this context, counseling is not a luxury but an essential part of education. GRS counseling is rooted in listening deeply, connecting empathetically, and helping students navigate their experiences without judgment. The approach is holistic: we don't just address academic difficulties or behavioral concerns, but also emotional, social, and personal development.

As a multiple-intelligence-based school, students and parents begin the counseling journey with DMIT (Dermatoglyphics Multiple Intelligence Test). This scientifically grounded assessment helps parents and students understand individual learning styles, hidden talents, and the natural strengths of the

child. DMIT counseling provides a lens to see learning in a new way, moving beyond grades to recognize how a student processes information, solves problems, and expresses creativity. By understanding this, both students and parents gain clarity on the most effective ways to learn, grow, and handle challenges.

The Counseling and Wellness Department actively engages parents through targeted parenting programs, workshops, and sessions that focus on fostering healthy relationships, communication, and guidance strategies at home. Parents learn how to connect better with their children, nurture their strengths, and support them in overcoming obstacles without pressure or fear.



FACILITIES

Supporting Learning and Life at GRS

GRS facilities are thoughtfully designed to nurture curiosity, encourage independence, and support well-being, ensuring every child can explore their potential fully while enjoying a balanced, holistic school life.

Transportation: Safe Journeys, Every Day

Getting to and from school is safe, reliable, and stress-free. The modern fleet of buses covers all major routes across the Kathmandu Valley, managed by an experienced team dedicated to student safety and punctuality. Every trip is carefully planned to ensure comfort, timely arrivals, and peace of mind for parents, while giving students a smooth and secure start and end to their school day.



Cafeteria: Nourishing Minds and Bodies

Good food fuels great learning. Spacious cafeteria serves hygienic, nutritious meals prepared by skilled professionals. From breakfast to snacks and main courses, every menu is thoughtfully designed to support energy, concentration, and overall well-being. Beyond meals, the cafeteria is a space for learning healthy eating habits, guided by regular counseling and awareness programs that reinforce mindful nutrition.



Infirmary: Care When You Need It

Health and safety are top priorities at GRS. Our dedicated infirmary, staffed by a certified school nurse, provides first aid, regular health check-ups, and wellness counseling. In addition to immediate care, we run health campaigns and educational sessions to help students understand and maintain their own well-being. The infirmary ensures that every student feels safe, supported, and ready to engage fully in their learning journey.





Library: A World to Explore

The library is much more than a collection of books, it's a dynamic hub for curiosity, exploration, and lifelong learning. Collection is continuously updated with books, journals, and magazines spanning literature, science, leadership, innovation, and soft skills. Students have access to dedicated reading corners and discussion spaces, fostering quiet reflection as well as collaborative exchange of ideas. Guided by experienced Reading Program Head and co-worker, they learn to research, analyze, and engage critically with texts. The library also hosts themed reading programs, workshops, and interactive sessions that inspire students to explore beyond their syllabus, developing their knowledge, creativity, and global awareness.



Playground & Sports: Learning Through Movement

Healthy body is integral to a healthy mind. School offers expansive, well-equipped playgrounds and sports fields for football, basketball, volleyball, and a variety of other activities. These spaces provide students with the freedom to play, practice, and compete, supporting physical fitness, coordination, and confidence.

Professional coaches guide students not just in mastering skills and techniques, but in understanding sportsmanship, teamwork, resilience, and strategic thinking. Younger students enjoy safe, modern play areas that encourage creative movement, exploration, and social interaction. Physical activity is woven into the school routine, making sports and outdoor exercise an essential part of holistic development rather than an optional add-on.



Swimming Pool: Fitness, Fun, and Safety

GRS swimming pool is designed to accommodate students of early ages and skill levels, providing a safe and supportive environment for learning water safety, building cardiovascular stamina, and developing full-body strength.

Instructors lead structured lessons, balancing safety with enjoyment, while teaching students proper techniques, teamwork, and self-discipline. Regular sessions are integrated into the school's physical activity program, ensuring that swimming contributes to students' overall fitness, coordination, and resilience.

GRS Resource Center

GRS Resource Center is a living archive, a guidebook, and a training ground all in one.

The Resource Center houses everything a teacher, staff member, or even a curious parent might want to know about how GRS works and why it works the way it does. The Resource Center ensures that everyone who joins us steps in already aligned with our values, our systems, and our commitment to growth.

The shelves are thoughtfully stocked:

- » Literature on the art and science of teaching, practical for everyday classrooms.
- » Writings on educational philosophies like Multiple Intelligences and Neuro-Linguistic Programming with Core Principles
- » Guides on leadership, positive discipline, time management, and work ethic, the core character skills we expect in ourselves as much as in our students.
- » Hostel, canteen, sports, and ECA guidelines, so that life beyond classrooms also reflects order and purpose.

The center is home to collected works on pedagogy, records of achievements, and creative initiatives that keep the GRS spirit alive. It is both a practical hub for daily operations and a symbolic place of pride, reminding us that every success we celebrate today is built on clear principles, disciplined effort, and collective memory.



GRS RESIDENCE

A Home Away from Home

Residential Facility

Residential facilities are thoughtfully designed to provide students with a safe, comfortable, and nurturing environment where learning and personal growth go hand in hand. Spacious, ergonomically arranged dormitories create a peaceful atmosphere for rest and study, equipped with all essential amenities to make students feel at home.

Students are supported by dedicated wardens and caretakers who ensure safety, guidance, and well-being at all times. Nutrition is a priority, with well-balanced meals that fuel both body and mind. Structured daily routines balance study hours, extra academic support when needed, and access to computers and internet resources, helping students maintain academic excellence.

Residential life goes beyond academics. Daily activities integrate sports, swimming, outdoor adventures, and recreational programs to promote physical fitness, teamwork, and social development. Living in school fosters independence, responsibility, and time management, shaping students into confident, self-reliant individuals ready to flourish in school, the wider community, and life beyond.

Semi-Residential Facility

GRS offers a semi-residential program for busy families who wish their children to experience weekday immersion at school while returning home on weekends. Students are transported to school on Sunday mornings and back home on Friday evenings, maintaining a healthy balance between structured school life and family connection.

During weekdays, students engage fully in academics, co-curricular, and extra-curricular activities under the guidance of professional instructors. Additional or remedial support is provided whenever needed, ensuring that each child keeps pace with their learning and growth.

This program provides a structured environment that promotes holistic development, social interaction, and personal responsibility, while allowing students to stay connected to home life, truly offering the best of both worlds.



TEACHERS' PROFESSIONAL DEVELOPMENT

Growing Together

Great teachers shape great students. That's why professional development is central to our school culture. We don't just train teachers, we empower them to grow, innovate, and inspire every day.

Continuous Learning

Guided by the principle "every day is an updated day," our faculty engage in regular training sessions, workshops, and orientations. These programs refine teaching strategies, integrate modern methodologies, and ensure classrooms remain dynamic, engaging, and student-centered.

Collaborative Growth

Teachers at GRS benefit from peer learning, mentoring, and feedback cycles, creating a vibrant professional community where ideas are shared, challenges are addressed, and skills are constantly honed.

Academic Partnerships

GRS collaborates with leading academic and training organizations to connect our faculty with the latest pedagogical research, practical insights, and collaborative programs. These partnerships help our teachers stay at the forefront of educational innovation, enhancing student learning outcomes.

The Goal

By investing in our teachers, we ensure that students receive the highest-quality education, guided by faculty who are skilled, confident, and continually evolving alongside the ever-changing world of education.



PARENTS' INVOLVEMENT

Partners in Learning

Education as a shared journey between school and home. Parents are not just observers, they are true partners in nurturing the growth, development, and well-being of their children.

Regular Interaction

GRS encourages parents to meet the Principal, teachers, and academic staff by prior appointment to discuss academic progress, social-emotional development, and any concerns or opportunities for their child.

Structured Engagements

Throughout the academic year, parents are invited to participate in:

Orientation & Welcome Meetings: Kick-starting the session with an introduction to school programs, curriculum focus, and learning goals.

Regular Parent Teacher Meetings: Ongoing discussions with class and subject teachers to track academic growth and personal development.

Progress Report Distributions: Detailed reports highlighting achievements, strengths, and areas for improvement.

Special Events & Programs: Showcases of student learning, creativity, and talent, providing a glimpse of classroom and co-curricular experiences.

International Curriculum Entry and Exit Reviews: For primary level students, structured reflections to monitor learning milestones, skill development, and holistic growth.



MESSAGE FROM PRINCIPAL

Dr. Kuldip Neupane



“A true education shapes the whole person: a brain that shapes insight, a heart that feels its truth, and a body that lives it through responsible action”

At Godawari Residential School, we believe that true education transforms the whole child; the Brain, Heart, and Body. The brain stores knowledge and information, the heart embodies emotion and empathy, and the body reflects action and discipline. When these three dimensions of learning come together in harmony, education becomes a living experience that shapes responsible, compassionate, and capable individuals.

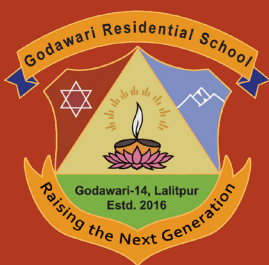
Every child who enters our school carries a unique blend of potential and curiosity. To nurture this individuality, we employ Multiple Intelligence and Neuro-Linguistic Programming as guiding tools. MI helps us identify each learner's distinct strengths, while NLP supports understanding of how students think, communicate, and respond emotionally, enabling more empathetic and effective teaching.

We place great importance on teachers' continuing professional development, ensuring that every educator remains a learner, innovator, and reflective practitioner.

Through sustained training and collaboration, our teachers refine their craft to create engaging, research-based, and student-centered learning environments. Recognizing the complexities of the 21st century world, we emphasize student counseling as an essential component of education. Our counseling initiatives help learners manage stress, navigate choices, and maintain emotional balance amid modern challenges, fostering resilience and self-awareness.

Our classrooms thrive on inquiry, collaboration, and real-life application. We are committed to nurturing minds that think critically, hearts that feel deeply, and bodies that act responsibly, shaping individuals ready to lead with wisdom, empathy, and purpose.

Dr. Kuldip Neupane
Director Principal



Godawari Residential School

Managed by
Xavier Education System Pvt. Ltd.

Nepal's First Multiple Intelligence Based School.



01-5560310/5560555



grsgodawari@gmail.com



Badegaun, Godawari-14, Lalitpur



www.grs.edu.np



grs.edu.np