

Shaping Minds from Greatness to Goodness



**KATHMANDU MODEL
SECONDARY SCHOOL**



Previously known as



NATIONAL
(Secondary School)



**Science
Management
Law
Humanities**

International Collaboration

KMC has signed MoU with different renowned universities and academic institutes beyond the country to promote the cooperation and the advancement of academic and educational exchange programs between and among the institutions. MoU signed to this effect includes- exchange of students, exchange of faculty or staff, special academic program, research and innovation and extend study abroad program.

Stony Brook University, New York, USA Georgia

Southwestern State University, USA

Qtec Learning Solutions-UK

Mokpo KMC University, South Korea

Tongren Polytechnic College, China

University of Missouri, USA

Shandong University, China

Recently, 40 students and faculty members of KMC attended the summer program workshop in Shandong University, China in June 2019.

KMC has signed MoU with different renowned university and academic institutes of abroad to promote the cooperation and the advancement of academic



Message from the Principal

“ We promote high academic standards and expect discipline, decency and devotion from our students too. Equally, we believe in constructive and constant participation from our guardians too.”

Dear Students,

Congratulations on your success in the SEE !
We are here to offer you the world class holistic education by combining up the NEB Syllabus with other supplementary courses in teaching learning pedagogy.

We seek to instill a passion for learning in our students by infusing ethics and values, combined with knowledge and understanding, for the positive contribution to society. We promote high academic standards and expect discipline, decency and devotion from our students too. Equally, we believe in constructive and constant participation from our guardians too.

The teaching faculty, here at KMC, comprises highly qualified, well experienced and hard working educators who work ceaselessly to shape the future of students.

We conduct regular and periodic Exams and Assessments to impart competitive skills to the students. We value the individual differences of the students and treat them accordingly.

Getting the Academic Excellence Award by the Ministry of Education for outstanding result in the year 2075 has not only made us excited but also added the responsibility to contribute more in the academic arena.

Choosing the right educational institute after SEE is a life changing decision. KMC, we assure, with its high quality pedagogy, ensures that students will yield a positive return on their investment.

We have a dream wherein KMC and the products of it are rated as the best in the country for academic brilliance and sense of social responsibility.

You are welcome to KMC, Lalitpur to fulfill this dream.



Surendra Subedi



KMC a Glorious History

KMC is an institution reputed for quality education and learning across the country and abroad too. It has been striving for quality education since its inception in 2000 A.D. Over the last 19 years, it has carved out an enviable niche for itself as one of the leading and top ranking colleges in the country.



The motto of KMC, 'Academic Excellence Through Quality Education', has become a key factor for its steady growth and it has been able to attract the studious students.

KMC owes its growing popularity and outstanding performance to its qualified and professionally competent faculty members who possess cutting edge knowledge and skills in their respective disciplines. 100% results in both NEB and TU exams are the testimonies due to the untiring efforts of the competent and experienced teachers in discharging their duties with full professional integrity and sincerity.

KMC is committed to maintain its top ranking position in educational institutions in the private sector. Its achievements as reflected in various ongoing academic programs starting from Pre-Primary to Masters Level validate our claim. The remarkable success in running School, +2 in

Science, Management, Humanities and Law; Bachelor Level in BBA, BBM, BA, BBS, BSW, BCA, BE in Civil, Computer, Electronics & Communication, BSc CSIT, B Arch and Masters Level program in MA (English) and MBS reflects its strength in academic arena. Beyond pure academic program, KMC is also offering CA program and has established research wing named KMRF too.

KMC is proud to be ranked as one of the best academic institutes and got Excellence Award (Letter of Appreciation) from the Ministry of Education in the year 2075 for having achieved outstanding result among more than 3600 Plus Two Schools in the country. It is because of the emphasis of the college on quality education that a good number of students graduating from KMC have been selected and awarded scholarships for higher studies in medicine, engineering and other technical and professional programs.

100% results in both NEB and TU exams are the testimonies due to the untiring efforts of the competent and experienced teachers in discharging their duties with full professional integrity and sincerity.



Welcome to KMC@Lalitpur

KMC, genuinely academic institution in Kathmandu valley, extends the heartiest congratulations to all SEE graduates on coming through with the flying colors!

With the successful completion of decade long high school experience, it is now time to make the right choice and decision that will shape your future. Let us help you catch a glimpse of what the post SEE world has to offer and how you can end up with what is best for you at KMC.





An Overview



KMSS Lalitpur started its academic venture in 2000 under the name of 'National Campus'.

Rooted in the legacy of unparalleled commitment to excellence in education, it is owned by Kathmandu Model College (KMC), an unbroken progress over the last nineteen years in the field of education.

With the proactive presence of KMC management team and its qualified, dedicated faculties, KMC, Lalitpur aims

at achieving excellence in the academic arena and reach out to a newer height.

Over the last decades, the corporate world has felt an escalating need of capable and efficient people both at home and abroad. Society cries out for dynamic social entrepreneur to spearhead the cause of burning social issues.

KMC is determined to help answer these calls by giving the right lead and the right foundation.

Rooted in the legacy of unparalleled commitment to excellence in education, it is owned by Kathmandu Model College (KMC), an unbroken progress over the last seventeen years in the field of education.



VISION

To develop itself as the center of academic excellence at par with national and international standards by shaping minds from greatness to goodness.



MISSION

To establish itself as a world class learning center inculcating positive attitude, skills, ability and value-based knowledge in students to help them compete successfully in their chosen disciplines.



OBJECTIVES

- To prepare fully knowledge-based capable students to enable them in pursuing higher studies
- To develop socially responsible and result oriented professionals with scientific approach and outlook.
- To provide internationally recognized quality education together with practical knowledge through business skills and technical trainings.
- To provide quality education and produce professional of different levels in sectors like business, legal, public, governmental and development organizations.
- To increase the level of maturity and power of logical thinking in our students.

CORE VALUES

- To proactively recognize and respond to students' need through one to one attention, small classes, by focusing on each students as an individual
- To begin by providing quality learning experiences that lead to success
- To focus on career preparation and emphasize the practical application of learning.
- To foster interpersonal skills of students, including self-management, leadership, academic integrity and social communication.
- To ignite a lifelong love for learning.



Program Offered



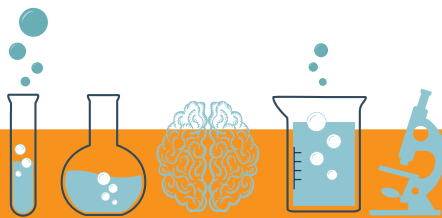
KMC imparts the best available +2 programs as per the curriculum and syllabus designed by Curriculum Development Center (CDC) of Ministry of Education in association with National Examination Board (NEB), in Science, Management, Law and Humanities by following a unique methodology that emphasizes periodic assessment as per the requirement.

The +2 program at KMC is divided into four different combinational subject groups. Students can choose from these combinations: The existent course combinations are provided in the following pages. New curriculum will be implemented as per the government final decision.

+2 Science
Management
Law
Humanities



SCIENCE



Science in +2 is a two years course designed to provide basic understanding and knowledge about the science contents. This stream is often chosen to pursue career in Medical, Engineering and Technical fields. The practical component of the course is designed to supplement learning through the application of theory.

GRADE XI

Compulsory English
Physics
Chemistry
Mathematics
Biology/ Computer Science

GRADE XII

Compulsory English
Compulsory Nepali
Physics
Chemistry
Biology/ Mathematics

* In Grade XII, students of Biology/ Computer Science can take Mathematics as an additional subject.

Besides the regular classes, we have mixed up weekly Medical and Engineering Entrance preparation classes in grade XI and XII in association with TOP entrance preparation centers.





MANAGEMENT



Management course in +2 level provides the basic knowledge about the facts & principles of the management, accounting and business. It creates the base for students to pursue their career in management field with managerial responsibilities in all kinds of organizations by empowering them with essential skills to adapt to any situation. Management learning is a continuous, life long process.

GRADE XI

Compulsory English
Compulsory Nepali
Accountancy
Economics/Hotel Management/Business Studies
Computer Science/Mathematics/ (Any Two)

GRADE XII

Compulsory English
Accountancy
Business Mathematics
Economics/ Hotel Management/Business Studies
Computer Science/Mathematics/ (Any Two)

ADDITIONAL FEATURES

Besides the curriculum of NEB, students get soft skill oriented classes like Presentation Skill Development, Event Management Training, MS Office Package, Industry Visit, etc. in the Management Stream.



LAW



The recently developed Law course in +2 level has extensive scope in the national and international arena. It enables students to gain general understanding about law developed by different school of legal thoughts. It empowers students to make interpretation of various laws essential to comprehend political, administrative and legal sectors.



GRADE XI

Compulsory English
Compulsory Nepali
General Principles and Theories of Law
Nepalese Legal System
Constitutional Law and Nepalese Constitution

GRADE XII

English
Legal Drafting
Procedural Law
Civil Law and Justice and
Criminal Law and Justice
Human Rights

Besides the regular classes, we have mixed up weekly court visit, seminar and internship program in law firm.

HUMANITIES

Humanities is the most comprehensive and extensive domain having a wide range of optional subjects than in other streams to be pursued by students to build their career. It enables students to widen their social horizon and perspective about life. It focuses on the increment of knowledge about life and social surroundings. The basic aim of Humanities is to inculcate human values and norms to make students morally upright and socially responsible.

GRADE XI

Compulsory English
Compulsory Nepali
Sociology / Mass communication / Economics,
Psychology / Mathematics /
Optional English **(Any Three)**

GRADE XII

Compulsory English
Contemporary Society or Rural Economics
Sociology / Mass communication / Economics,
Psychology / Mathematics / Optional English
(Any Three)

* Students may choose the subjects as per the guidance of Admission Committee





Architecture

KMC takes pride of its own buildings with unique design as the symbol of our commitment to the innovation in the field of education. The squat box-like building and the signature blue framework are elements of pure architectural bliss, that will make you forget the eyesore right outside the walls.

The main academic building stands as an example of unparalleled aesthetic genius. Spreading over 12 ropanis of land, it pleasingly overwhelms you by its futuristic architecture towering over expanses of tiled courtyards overlaid with geometrical spaces of green grass. After a brief walk through the comfortably wide parking lot, you are greeted in the left by a modern administrative block followed by an academic service building in a brief distance.

Apart from its aesthetic pleasure, the building is designed as High Earthquake-Resistant. Our Classrooms and Labs are wide and spacious, equipped with sufficient modern teaching-learning aids.





Admission Procedure

Admission to KMC is highly competitive. Students need to go through a fair and rigorous selection process for getting admission.

ELIGIBILITY

Candidates must have SEE or equivalent education with minimum Grade 'B' for Science and 'C+' for Management, law and Humanities. The minimum eligibility will be set as per the decision of NEB.

ENTRANCE TEST

The Admission Committee conducts Entrance Test for the different programs. The Test will

be in objective form and students can choose the Handwritten or Computer based model.

Science: Entrance questions include Mathematics (40 marks), Science (40 marks) and English (20 marks).

Management and Humanities: Entrance questions include Mathematics (40 marks), English (40 marks) and GK (20 marks).

Law: Entrance questions include English (50 marks), and GK (50 marks).

(The model questions for entrance test can be downloaded from the website.)





Scholarships

KMC provides merit/need based significant number of Scholarships under several titles. Deserving students may obtain details of scholarship scheme from the administration.

➔ Special Scholarship Schemes

- Separate entrance test will be conducted for student of Government School who apply for Special Scholarships.
- Limited Number of student will be Provided this Scholarship on Merit Basis.

➔ Basic Scholarship Schemes for Science

- Scholarship for Science in Grade XI is on the basis of Cumulative marks (**Cumulative Marks = Send-up (25%) + SEE (25%) + KMC Entrance (50%)**)
- Marks of Send-up and SEE will be calculated as follows:
 - A+ (3.8 & above) = 25 marks
 - A+ (3.65 & above) = 22 marks
 - A (3.25 & above) = 20 marks
 - B+ (2.85 & above) = 15 marks

➔ Basic Scholarship Schemes for Management, Humanities & Law

- Scholarship for Management in Grade XI is on the basis of Cumulative marks **Cumulative Marks = Send-up (25%) + SEE (25%) + KMC Entrance (50%)** of Send-up, SEE & KMC Entrance.
- Marks of Send-up and SEE will be calculated as follows:
 - A+ (3.8 & above) = 25 marks
 - A+ (3.65 & above) = 22 marks
 - A (3.25 & above) = 20 marks
 - B+ (2.85 & above) = 15 marks
 - B+ (2.45 & above) = 10 marks

SCHOLARSHIP SCHEMES IN XI SCIENCE*

S.N.	CUMULATIVE MARKS	ANNUAL FEE	LABORATORY FEE (1 st INSTALLMENT)	TUITION FEE	NUMBER OF SCHOLAR
1	90 and above	100%	100%	100%	20
2	85-89	100%	50%	100%	20
3	80-84	50%	25%	50%	20
4	75-79	50%	-	25%	20
5	70-74	25%	-	25%	20

SCHOLARSHIP SCHEMES IN XI MANAGEMENT, HUMANITIES & LAW

S.N.	CUMULATIVE MARKS	ANNUAL FEE	TUITION FEE	NUMBER OF SCHOLARS
1	80 and above	100%	100%	20
2	75-79	75%	75%	20
3	70-74	50%	50%	20
4	65-69	50%	25%	20
5	60-64	25%	25%	20

SCHOLARSHIP SCHEME FOR CLASS -XII ACCORDING TO THE CLASS XI NEB RESULT

S.N.	NEB GPA	SCHOLARSHIP	NO. OF SCHALORS	DURATION
1	3.86 and above	100% on Tuition fee, Lab & RP fee	All	3 months
2	3.61 to 3.85	50% on Tuition fee	All	3 months
3	3.41 to 3.6	25% on Tuition fee	All	3 months

SCHOLARSHIP SCHEMES ACCORDING TO TERMINAL EXAM

S.N.	MARKS IN TERMINAL EXAM	SCHOLARSHIP	NO. OF SCHALORS	DURATION
1	Topper or 80% and above	100% on Tuition, Lab & RP fee	All	3 months
2	75% and above	50% on Tuition fee	All	3 months
3	70% and above	25% on Tuition fee	All	3 months

Notes:

- The scholarship quota is limited so it will be provided according to **FIRST ADMISSION FIRST BASIS**.
- Above schemes on tutiton fee during admission are allocated only for 3 months (upto First Term Exam).
- The scholarship will be changed according to the result of terminal examination as mentioned above.



Achievement



Recent Achievers



Aastha Acharya
NEPAL TOPPER
XI/XII-LAW



Alish Prajapati
Scholarship, IOE



John Poudel
Scholarship, IOE



Neha Shah
Scholarship, MBBS



Lekhraj Singh
Scholarship, IOE



Bipin Sapkota
Scholarship, IOE



Sambhavi Adhikari
Scholarship, IOE



Sanket Khatiwada
Scholarship, IOE



Sijal Raymajhi
Scholarship, IOE



Susmita Pun Magar
Scholarship, MOE



Pawan Sapkota
Scholarship, KU



Balram Sah
Scholarship, PU



Saroj Kumar Pokhrel
Scholarship, IOE



Sudip Bhai Subedi
Scholarship, IOE PU



Asbin Gautam
Scholarship, MOE, MBBS

NEB Exam Topper (Science (XI))



ROHIT JOSHI
3.92



SANDESH REGMI
3.92

NEB Exam Topper (Law XI)



ANUBHOOTI SHRESTHA
3.6

Infrastructure and Services



The increasing competition at present day education calls for better infrastructure and resources. A strong infrastructure is an important factor in creating atmosphere conducive to education. To get our students in the right mood, KMC has made every possible effort, right from the design of the building down to the very last detail.

OUR CLASSROOMS: THE RIGHT AMBIENCE

Spacious, well ventilated, with natural lighting and replete with modern decor; naturally invite and inspire teaching practical learning in our 21 class rooms.



OUR SCIENCE LABORATORIES: BRIGHT & AMPLE

Ample, naturally bright and airy, with plentiful instruments and materials offer the peace and space for research and learning.

COMPUTER LAB, INTERNET SERVICES: SPACE AND SPEED

Well equipped computer labs with the internet library, spacious, naturally lit, ventilated, offers high speed broadband lease line connection.





LIBRARY: SPACE FOR FURTHER READING

Updated and rich library having collection of books, references, periodicals, videos, CD-ROMs and most importantly access to e-library facilitate the teaching learning process further.

‘AHAARA’: OUR CAFETERIA

Awash with sunlight and equipped with modern technology, colorful furnishings and industry trained staff donning the professional white, Ahaara serves fresh, hot and delightful meals!

THE AUDITORIUM: MODERN ELEGANCE

Simply sober auditorium, with French windows breathing sunlight and fresh air and internet hook-up facilities from each of the 80 plush red seats.

TRANSPORTATION

KMC owns its own buses to facilitate transportation for students. It provides transportation facility to commute to and fro the school at a very reasonable cost. The available shuttle-service-route can be taken from the administration.

HEALTH CARE

KMC makes avail of health care and medical emergencies to its students as and when required.



TUITION AND EXTRA CLASSES

KMC assumes the responsibility to help its students avail of additional academic help and support in the form of extra classes with appropriate tutors.

ACADEMIC COUNSELLING

KMC provides adequate information on how to better up in study while studying here with the help of experienced counselors. Furthermore, we feel our responsibility to provide after study counseling to students who wish to study abroad. Students will also be assisted and trained in the documentation process to manage visa interviews.

BEHAVIOR COUNSELLING

Growing up means change, physically and emotionally! These changes, sometimes subdued and adjusting but very often just turbulent and pressing, need to be handled and handled correctly. How does KMC help? We facilitate counseling with the assistance of experienced and committed counselors!



Learning Process

We adopt a participatory method of teaching and learning that demands rigorous participation from students and teachers. A careful blend of the traditional classroom learning with more contemporary tools and techniques of learning is a key to increase overall learning efficiency.





GROUP DISCUSSIONS

According to the subject demand, group discussions among students are organized frequently so that diverse ideas are shared. The whole process of learning thus, becomes fun, stimulating and meaningful.

CLASS PARTICIPATION

Inquisitiveness is highly appreciated at KMC. Students are encouraged to put forward their queries and doubts without hesitation. They are likely to face surprise tests and pop quizzes to test their awareness and focus.

GUEST LECTURES

Leading personalities and authorities from various fields are regularly invited to speak to students on a variety of subjects and share from their storehouse of experience and knowledge. These activities inspire students for professionalism and create desire to take initiatives in life.

AUDIO-VISUAL AIDS

Each classroom has multimedia access. Audio visual and other teaching aids are used to ensure effective learning.

PROJECTS AND PRESENTATION

Students are assigned projects relevant to the course requirement. Project works are conducted as students need to demonstrate their ability to experiment, manage time and practice presentation skills.

FIELD TRIPS AND EXCURSIONS

We know, students need to experience the application of their knowledge in the real world. They get some time off from the similitude of classroom learning. For this purpose, we frequently organize excursions and field trips to enhance practical learning.

Faculty Members

KMC's faculty members are committed to impart top-quality education. The courses are combined with high academic standard and practical application. Our aim is to build tomorrow's Doctors, Engineers, IT Professionals, Managers, and Academic Leaders to effectively deal with complex, competitive and challenging environment. Faculty members are student-friendly ready to help all the time. In addition, we have visiting faculty members specialized in their respective areas to enhance the strength of students.

ECA/CCA & Sports

In the journey from greatness to goodness, structured academic learning is an important goal, not the final destination. So, our extra and co-curricular activities are designed to inculcate human goodness. They are conducted through different students' club.

- Talent Show
- Creative Writing
- Poetry
- Quiz
- Essay Competition
- Debate
- Leadership/Public Speaking Training
- Event Management Training
- Basic Computer Course
- Medical and Engineering Entrance Preparation Classes
- Sports





अन्तर्राष्ट्रिय टर्मिनल
INTERNATIONAL TERMINAL

Shandong University's 2019
Summer School for Nepalese High School
Students of KMC Educational Institutions

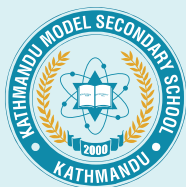
Shandhu Model
Laboratory School
Education Program 2076

NATIONAL
Talent
Show-2018

Trip to Muktinath







KMC@Bagbazar

Kathmandu Model Secondary School (KMC), the first institute under KMC educational network has carved out for itself an enviable niche at the summit of the best colleges in the country. KMC, in course of its decade long academic odyssey, has earned its place of pride through the vision and dedication in the academic field

Bagbazar, Kathmandu

Tel: 4242121, 4242015

ktmmodelcollege.edu.np

+2 SCIENCE

MANAGEMENT

HUMANITIES

LAW



Moment of Pride-2075

KMC, Lalitpur (Natal Sec. School) has been honoured by prestigious Educational Award 2075 by the Ministry of Education, Nepal for its outstanding results in Grade XII among the private schools of Nepal.





KMC Educational Network

KATHMANDU MODEL SECONDARY SCHOOL
Balkumari, Lalitpur, Nepal
Tel: 5201331, 5201334
www.kmclalitpur.edu.np

+2
Science
Management
Law
Humanities

Previously known as
NATIONAL
(Secondary School)

KATHMANDU MODEL SECONDARY SCHOOL
Bagbazar, Kathmandu
Tel: 4242121, 4242015
ktmmodelcollege.edu.np

+2 Science Law Management Humanities

KMC School
Buddhanagar, Kathmandu
Tel: 4787111, 4782016
kmcschool.edu.np

Play Group to Grade X

HIMALAYA COLLEGE OF ENGINEERING
(Affiliated to Tribhuvan University)
Chyasal, Lalitpur
Tel: 5540555, 5547266
hcoe.edu.np

BE: Civil, Computer, Electronics, Communication & Information Architecture
BSc. CSIT BCA

Apollo International College (AIC)
(Affiliated to Pokhara University)
Lakhechaur Marg, New Baneshwor, Ktm.
Tel: 4474845, 4474851
appolointcollege.edu.np

BBA / BBA-BI / BHM

THE NEW SUMMIT SECONDARY SCHOOL
Maitidevi, Kathmandu
Tel: 4428321, 4442775
newsommit.edu.np

+2 Play Group to Grade X
Science / Management
Humanities / Fine Art / Law

BUTWAL MODEL COLLEGE
(Affiliated to Pokhara University)
Padsari, Rupandehi
Tel: 071 - 429192, 429193
butmc.edu.np

BBA BHM | **MPGD**
Masters in Population Gender and Development

KATHMANDU MODEL COLLEGE
(Affiliated to Tribhuvan University)
Bagbazar, Kathmandu
Tel: 4242121, 4242015
kmcen.edu.np

BBA / BBS / BSW / BA / BCA / BBM
MBS MA (English)

UNIVERSAL College
NEW SUMMIT COLLEGE
(Affiliated to Tribhuvan University)
Shantinagar, Baneshwor, Kathmandu
Tel: 4620522, 4620523
uc.edu.np

BBA / BBS / BSW / BA / MA (English)
BSc. CSIT / BCA / BBM

KATHMANDU MODEL RESEARCH FOUNDATION (KMRF)
Bagbazar, Kathmandu
Tel: 4242865
kmrf.org.np

Research Works



KATHMANDU MODEL SECONDARY SCHOOL

Balkumari, Imadol, Lalitpur, Nepal
Tel: +977-01-5201331, 5201334
Email: info@kmclalitpur.edu.np
Web: www.kmclalitpur.edu.np

