

योग:कर्मशु कोशलम्

KATHMANDU BUSINESS CAMPUS



Affiliated to Tribhuwan University

Bachelor's in Business Studies
(BBS 4 Years)



Why Kathmandu Business Campus

Here are some great reasons for choosing Kathmandu Business Campus at the top of your priority list for studying Bachelor's in Business Studies in Nepal.

- We provide top ranked faculties.
- We arrange internship at leading corporations preferably in financial institutions, insurance companies, health care institutions, hospitality industries and manufacturing & trading organizations.
- We offer extensive case studies of international standard.
- We have excellent infrastructure required for academic institutions.
- We offer access to the Internet for all students as well as library and e-library.
- We help eligible students to secure appropriate job placements and part-time jobs with local employers as and when permitted.

CLAIM YOUR PLACE IN the GLOBE

Explorers, go-getters, connectors, nurturers, discoverers, free thinkers, challengers... they all have a place in the globe, and we've reserved one for you.

Because if you're ready to help create your own future, we're ready to equip you with the skills you need to make a real difference both at home and around the globe.

Claim your place alongside the next generation of Business leaders, Business managers and nation builders.

Join us at Kathmandu Business Campus for BBS 4 years academic program of Tribhuwan University.



"Learning gives creativity, creativity leads to thinking, thinking provides knowledge, knowledge makes you great."

– Dr. APJ Abdul Kalam

Why to choose this course

Bachelor's in Business Studies (BBS) provides an excellent broad-based grounding in all aspects of business and management.

Tribhuvan University (TU) is one of the top ranked university among the universities in Nepal.

The syllabus of TU degree are specially designed for Leaders, Entrepreneurs and Practicing Managers required for the Nation. The 4 years BBS program mainly focuses on:

Knowledge - Students within the BBS Degree Course will study the main management functions including Finance, Marketing, Human resources, Production management & Business Statistics.

Skills - Students will acquire the practical skills needed in the modern work place including leadership, group working, project management and presentations.

Bachelor's in Business Studies

A wide choice of Financially rewarding career opportunities.

The broad coverage of the Business Degree will prepare students to work in general management. Students could also specialized in one area of management after graduation, allowing them to utilize their general knowledge of other aspects of Management.

It provides a strong foundation for further study.

BBS Degree gives students the opportunity to progress to MBA/MBS programme as well as in other Master's Program. And open rooms for applying at any graduate degree in the world.

Curricular Structure

The rigorous curriculum for BBS degree comprises four separate and distinct course components. The course inter alia covers:

- A strong foundation in allied areas of business such as language, economic analysis, legal environment, quantitative methods and research methods to prepare graduates to understand, analyze and comprehend the management concepts, theories and practices.
- Core business studies encompassing and integrating all functional areas to provide graduates with an appreciation of the diversity and inter-relationship of business and management issues.
- The opportunity to concentrate in one area of specialization such as accounting, finance, human resources management, management science, and marketing in order to provide graduates with some degree of functional expertise.

First Year

Business English
Business Statistics
Micro Economics
Accounting for Financial Analysis
Principles of Management

Second Year

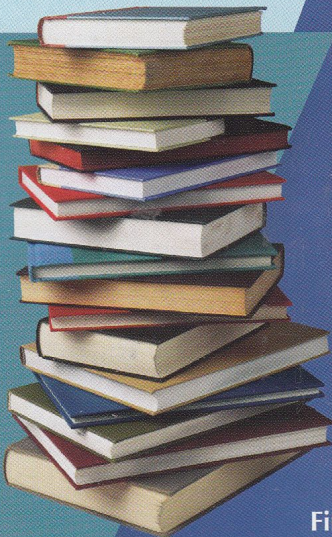
Macro Economics
Cost and Management Accounting
Fundamentals of Marketing
Foundations of Human Resource Management
Business Communication

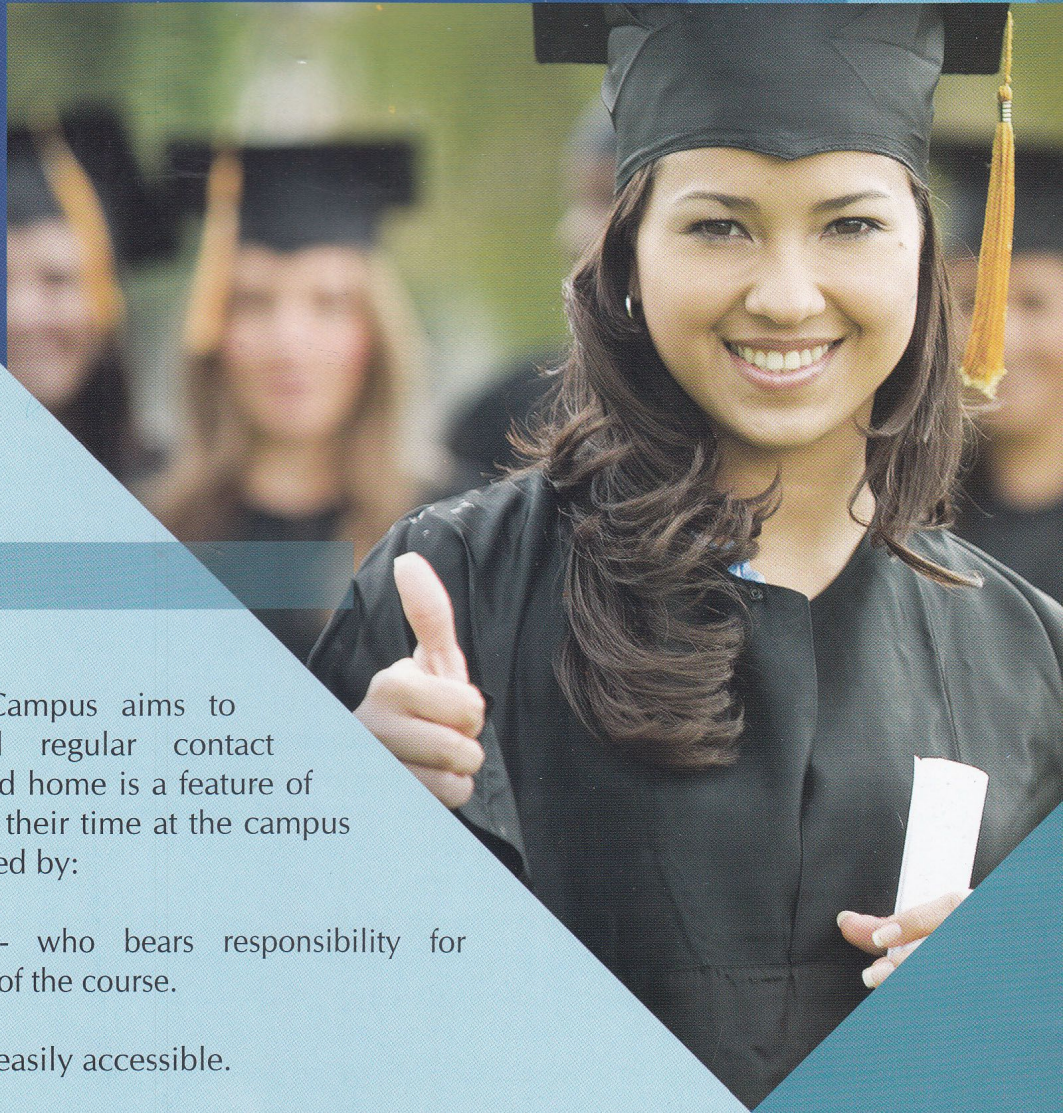
Third Year

Business Environment and Strategy
Fundamentals of Financial Management
Business Law
Taxation and Auditing
Organizational Behavior

Fourth Year

Entrepreneurship and Enterprise Development
Concentration I
Concentration II
Concentration III
Business Research Methods
Final Project





Our Support

Kathmandu Business Campus aims to support students and regular contact between the campus and home is a feature of the campus network. In their time at the campus students will be supported by:

Program Coordinator - who bears responsibility for academic administration of the course.

Faculties - Faculties are easily accessible.

Career Advisor - offering advice and support about pathways to further education, training or employment.

Guidance Counselors - who are available for confidential appointments.

Learning Services Department - to assess the learning needs of students and provide additional assistance where necessary.

"Someone is sitting in the shade today because someone planted a tree a long time ago."

– Warrent Buffett

"Great things in business are never done by one person, they are done by a team of people."

– Steve Jobs

Facility

Professional Learning Environment

We offer a supportive, international university style environment. Our classes are live and friendly, enabling students to build good relationships with faculties and the other stakeholders.

Study Centres

Our Study Centres offer extensive resources to support your studies including:

- Computers/laptops with the Internet connections and required software
- Group and individual study areas
- Books and journals on your reading lists
- e-Books and e-Resources relevant to your course, available in College
- Workshops and online tutorials on study skills
- Our experienced, friendly staff are on hand to help.

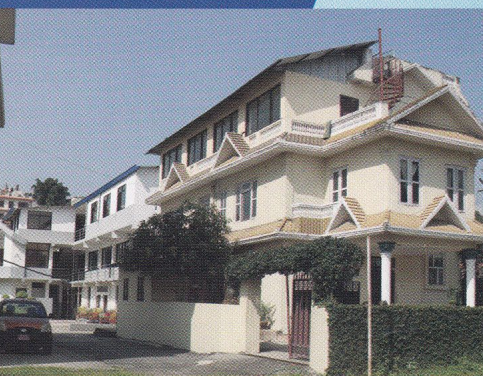
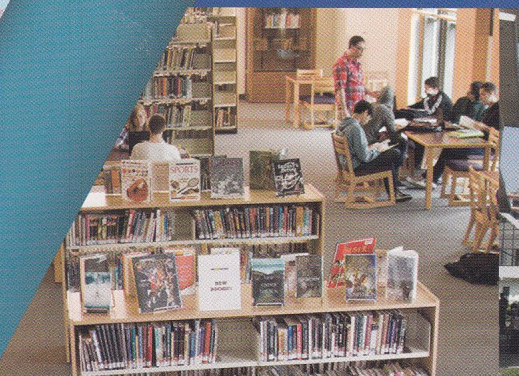
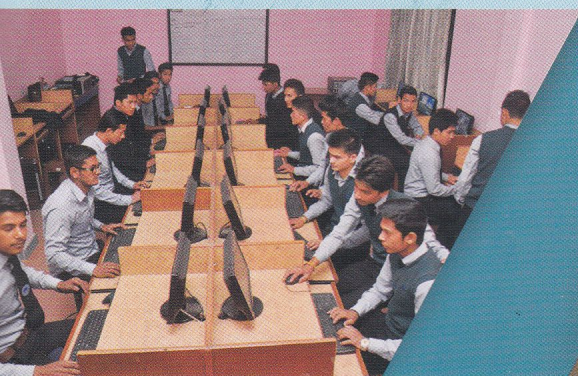
BBS course is based on Tribhuvan University Syllabus.

Experienced faculties along with friendly & co-operative staff.

Continuous internal assesment & grading system.

Extensive case studies of international standard.

Discuss assignments or have a break in our canteen or in open areas.

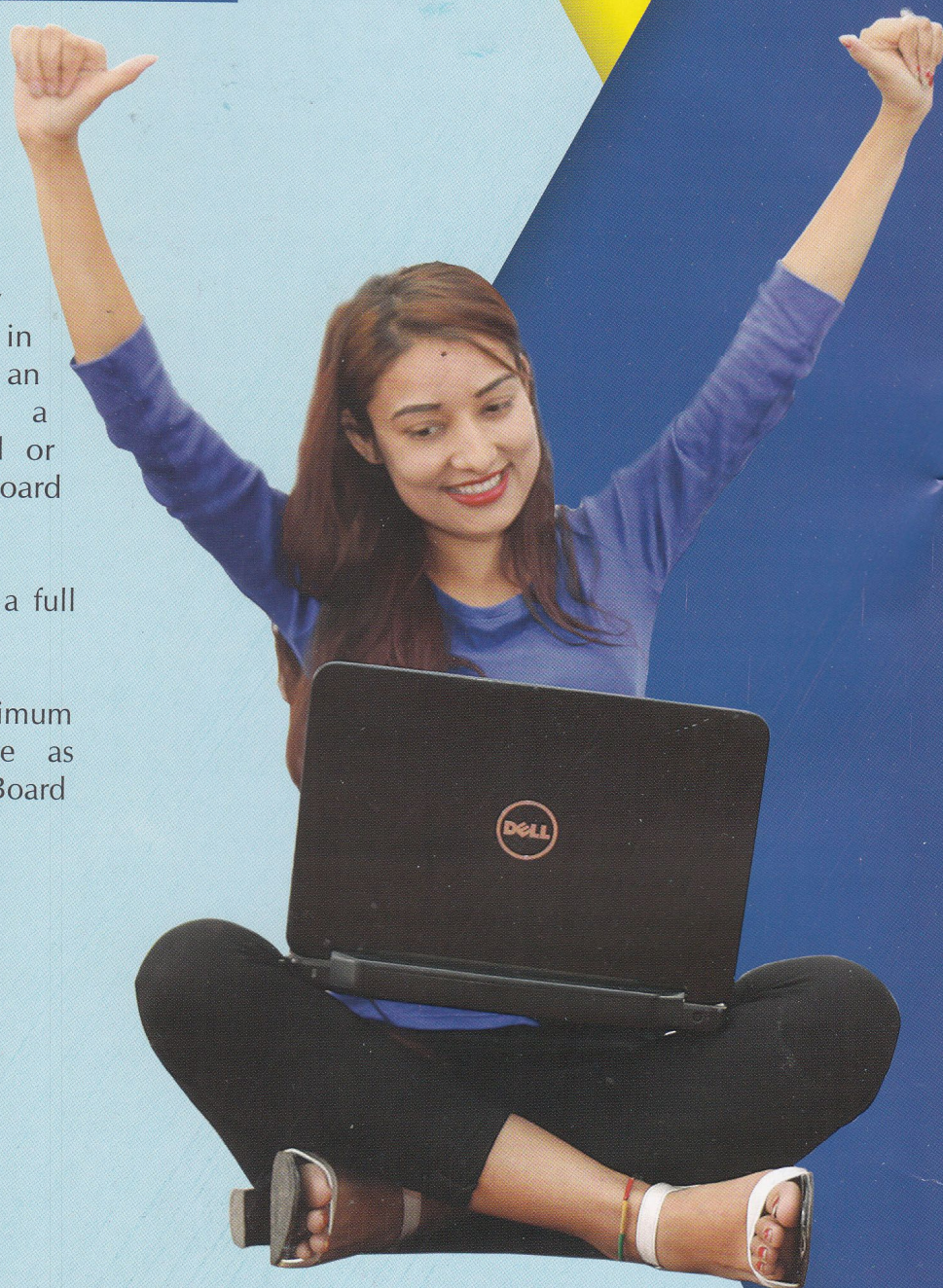


**OUR CLASSES ARE LIVE & FRIENDLY
ENABLING YOU TO BUILD GOOD RELATIONSHIPS
WITH YOUR FACULTIES AND THE OTHER STUDENTS**

Eligibility Conditions for Admission

The candidate applying for admission in the BBS programme:

1. Must have successfully completed 10+2 in business/commerce or an equivalent course from a National Examination Board or from any other University/Board recognized by TU.
2. Must have studied English as a full paper in 10+2 programme.
3. Must have secured the minimum marks in 10+2 programme as prescribed by the Faculty Board and/or the campus.
4. Must satisfy any other entry requirements or criteria including the entrance test as prescribed by the Faculty Board and/or the campus.



Minimum General Requirements

The minimum general requirements for the 4-years BBS programme are as follows:

1. An academic year will consist of a minimum of 150 teaching days excluding the days taken for admission and annual examinations.
2. The total instructional hours in an academic year will be 615 contact hours (150 days x 4:10 hours a day). For courses requiring field and practical works, additional hours of study will be required.
3. There will be a minimum of five periods (i.e. class hours) each teaching day. The campuses running morning or day shifts will also be required to meet this minimum class requirement.

APPLICATION

We strongly encourage you to visit and explore the campus. This would be an ideal approach for you to decide if Kathmandu Business Campus is the best choice for your university education.

Known for our high academic quality, career-driven programmes, excellent facilities and staff, academy centric location and a vibrant on campus lifestyle, the best way to decide if Kathmandu Business Campus is for you is to visit the campus. Drop by our Admissions and Counseling Unit where our programme counselors are available for a one-to-one discussion. Then, take a tour of the campus with one of staff.

For more information, you are welcome to contact us



Important!

Supporting documents required for applications

- Academic records (e.g. results, transcripts and certificates)
- English Language achievements (if any)
- School leaving / completion certificate
- Two (2) passport-sized photograph
- One (1) certified true copy of Identity Card (Citizenship/Passport)

Our Location Map

You can call us and visit our college & meet admission counsellors throughout Sunday to Friday from 8am to 5pm.



KATHMANDU BUSINESS CAMPUS



Contact Details

 Milan Tole, Tokha Road, Kathmandu

 01-5159255, 5159021

 info@kit.edu.np

Disclaimer

Kathmandu Business Campus makes all reasonable efforts to ensure that the information in this Prospectus is correct at the time of printing. The Campus makes all reasonable efforts to provide the degree schemes, tuition and learning support and research opportunities and other services and facilities with reasonable care and skill and in the way described in this prospectus. The campus reserves the right to withdraw or amend details published.

